

  
**PROMINENCE**  
ESTATES



**RESIDENTIAL**  
PROPERTY EXPERTS

COVENTRY, WARWICKSHIRE  
& LEAMINGTON SPA

**BEAUCHAMP HOUSE,**  
CITY CENTRE, COVENTRY, CV1 3RX

**PCM**  
**£975 PCM**

## BEAUCHAMP HOUSE



**PROMINENCE**  
ESTATES

Modern 2 Bedroom City Centre Apartment With Double Bedrooms. This amazing 2 bedroom apartment has secure gated access and also benefits from secure underground parking. In brief the apartment comprises; entrance hallway with porcelain floor tiles, open plan lounge and kitchen, two double bedrooms and a large bathroom. The apartment comes fully furnished, and ready to move in. Kitchen appliances and white goods included.

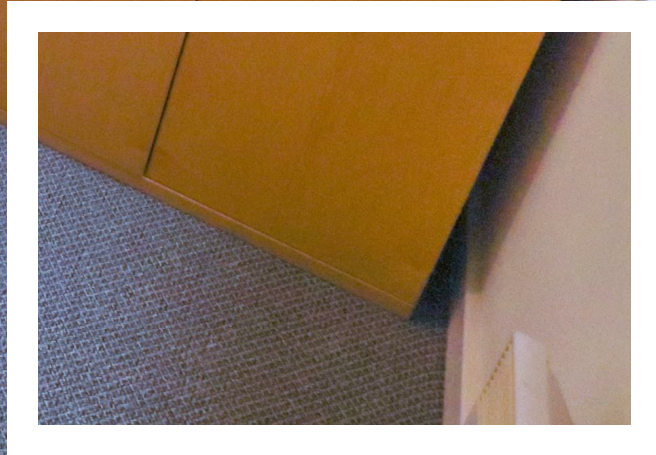
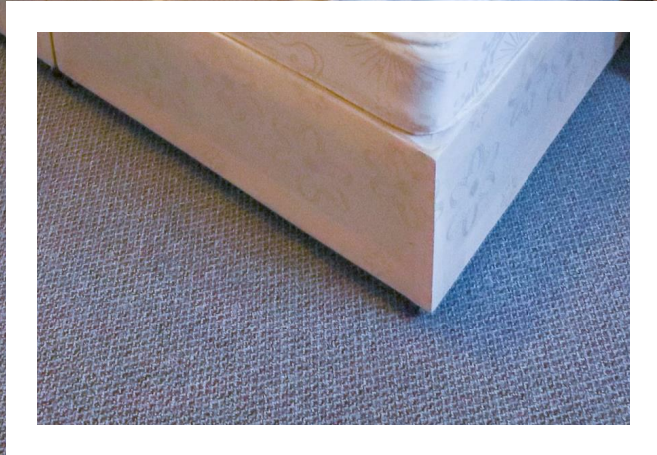
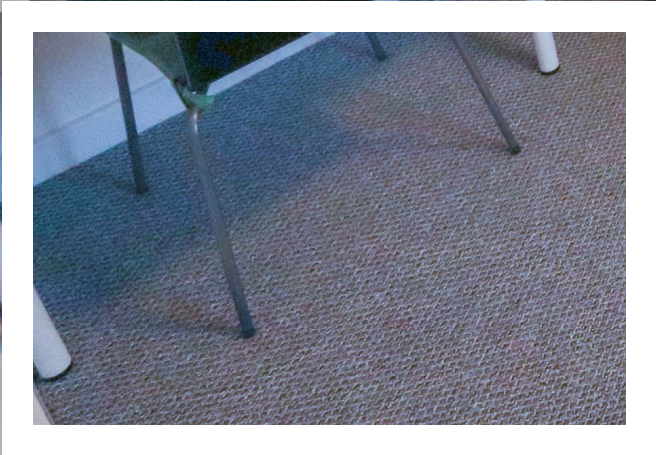
viewing then please call our Coventry office.



Located in the heart of Coventry City Centre this apartment is close to all local amenities including, retail shops, restaurants, markets and convenience stores. Within walking distance to Coventry train station and local bus routes.


If you require further information regarding this property or if you would like to arrange for a







### Energy Efficiency Rating

	Current	Potential
<i>Very energy efficient - lower running costs</i>		
(92 plus) <b>A</b>		
(81-91) <b>B</b>	<b>82</b>	<b>82</b>
(69-80) <b>C</b>		
(55-68) <b>D</b>		
(39-54) <b>E</b>		
(21-38) <b>F</b>		
(1-20) <b>G</b>		
<i>Not energy efficient - higher running costs</i>		
<b>England &amp; Wales</b>	EU Directive 2002/91/EC 	

Prominence Estates  
 5 Queen Isabels Avenue,  
 Cheylesmore,  
 Coventry,  
 CV3 5GE

02476 309 826  
[sales@prominenceestates.com](mailto:sales@prominenceestates.com)  
[www.prominenceestates.com](http://www.prominenceestates.com)

